



# ***GRADUATE & PLACEMENT SCHEMES***

NISSAN SUNDERLAND



# ***MAKE AUTOMOTIVE HISTORY***

Our programmes give you hands-on experience, working on multi-million pound projects all over the world. Whatever your degree, if you are ambitious and willing to learn, then a Nissan graduate or placement scheme may be for you.

## ***CONTENTS***

***NISSAN SUNDERLAND***

***P5***

***LIFE AT NISSAN SUNDERLAND***

***P9***

***THE SCHEMES***

***P15***

Placement Schemes

p19

Graduate Schemes

p33

***APPLICATION PROCESS***

***P53***





***“It’s incredible to think that six years ago I first saw the Qashqai on a computer screen; now I see them drive past me every day. I can see the parts I influenced and that gives me an enormous sense of pride.”***

***TOM***

SENIOR ENGINEER

# ***NISSAN SUNDERLAND (NMUK) IS THE BEATING HEART OF OUR UK MANUFACTURING OPERATIONS***

It's here that the first Nissan Bluebird for commercial sale rolled off the production line in 1986, and it's here that we're driving forward Nissan EV36Zero, a £1 billion project to create the world's first EV manufacturing ecosystem.

More than 6,000 of our workforce are based here, across a 362,000m<sup>2</sup> site of world-leading manufacturing excellence. The site is also home to its own solar and wind farms, vehicle test track and facilities like our sports and social complex and medical centre.

## ***EV36ZERO***

We are driving towards a more sustainable future, using our purpose, products and technology to deliver the future of mobility today. EV36Zero will transform Nissan Sunderland into a flagship EV hub, bringing together electric vehicles, renewable energy and battery production, and setting a blueprint for the future of the automotive industry. The project brings together a new electric crossover for our plant, the Envision-AESC gigafactory, and the renewable electric microgrid and forms part of Amibition 2030, Nissan's journey towards carbon neutrality.



## ***LEARNING & DEVELOPMENT***

With thousands of roles across a multitude of departments and functions, Nissan UK is brimming with the opportunity to progress. Diversity is one of our workforce super powers and we thrive on helping employees to experience as much of Nissan as possible through learning and development opportunities. Career pathways are wide and varied, with cross-functionality, lateral and upwards progression and the support and learning tools you need to get there.

## ***NISSAN WAY***

Nissan Way sets out our company way of doing things, with the 5 values underpinning how we can work together to achieve success.

The 5 values of the Nissan Way align our goals, while helping us work innovatively, transparently and with respect for ourselves and others.



***“The days fly by here at Nissan. I love the high energy, fast-paced environment, you walk into something different every day.”***

**DAN**

TRIM & CHASSIS MAINTENANCE STAND-IN SUPERVISOR



# ***LIFE AT NISSAN SUNDERLAND***

We believe investment in our graduate and placement students is key to their growth and success. As a member of our team, you will have access to many of our employee benefits, including car schemes, pensions and gyms.

You will also find a culture brimming with collaboration, innovation and progression, where you will be supported at every turn to achieve your goals.



# A WORLD CLASS OPERATION

Nissan Sunderland produces some 500,000 vehicles a year, making us the biggest car manufacturing plant in the UK, exporting to over 100 international markets. Joining the team here will mean you become a part of a world-class operational facility.



## NISSAN PLACEMENT BENEFITS AT A GLANCE...

Joining Nissan as a placement in Sunderland gives you access to our outstanding benefits package, including fitness centre and paid overtime.



Salary of £18,091



Fitness centre



Paid overtime  
and time in lieu



Sports and  
leisure complex



26 days' annual  
leave plus bank  
holidays



Travel opportunities  
(dependent on role)

## LIFE ON PLACEMENT IN SUNDERLAND

Located in the North East of England, at Nissan Sunderland we are responsible for production of the Qashqai, Juke and Leaf. We are capable of producing up to 500,000 vehicles a year which makes us the biggest car manufacturing plant in the UK, and export to over 100 international markets. All of this is made possible by our workforce of around 6,000 people, with support from additional contractors and suppliers. As a placement student you will receive a mentor from day one, 6-monthly appraisals which support your development and the option to attend formal training if required.



## NISSAN GRADUATE BENEFITS AT A GLANCE...

Joining Nissan as a graduate in Sunderland gives you access to our outstanding benefits package, including a company car ownership scheme, 26 days' annual leave and private healthcare.



**Salary starts from  
£30,600 rising every  
6 months, ending on  
£40,715**



**Company  
pension  
programme**



**Company share  
scheme**



**Car ownership  
scheme**



**Fitness centre**



**Paid overtime  
and time in lieu**



**Private  
healthcare**



**Sports and  
leisure complex**



**26 days' annual  
leave plus bank  
holidays**

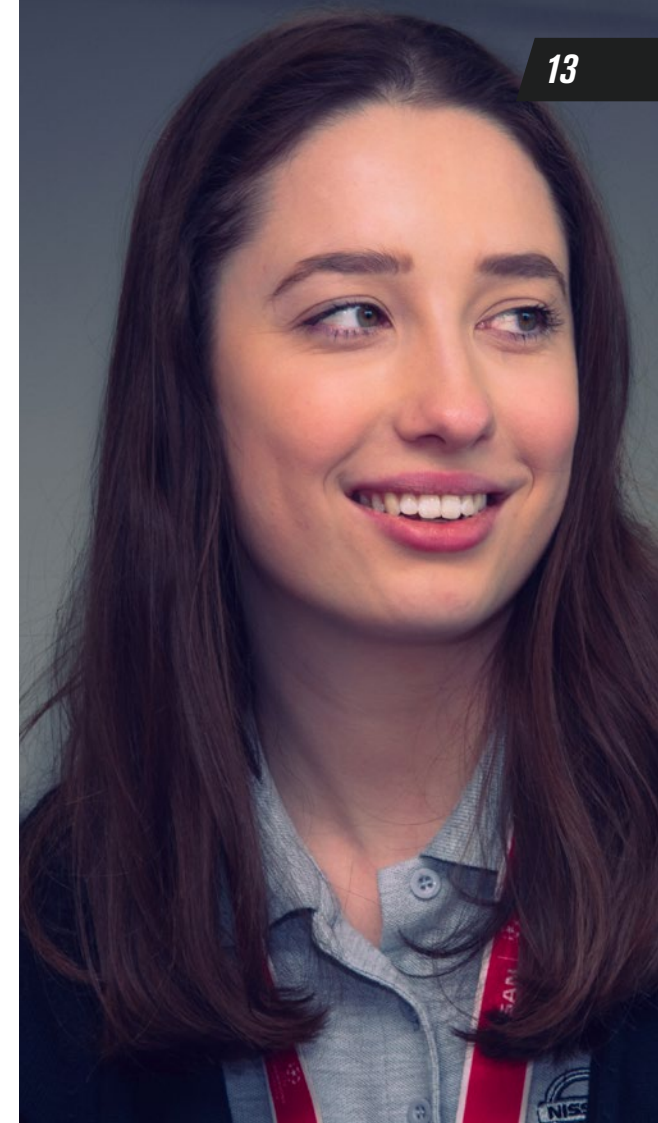


**Travel opportunities  
(dependent on role)**

## LIFE AS A GRADUATE IN SUNDERLAND

Located in the North East of England, at Nissan Sunderland we are responsible for production of the Qashqai, Juke and Leaf. We produce some 500,000 vehicles a year which makes us the biggest car manufacturing plant in the UK, and export to over 100 international markets. All of this is made possible by our workforce of around 6,000 people, with support from additional contractors and suppliers.

As a graduate you will receive a mentor from day one, 6-monthly appraisals to support your development and formalised training at Nissan or in the Lake District. We develop your leadership, teamwork, assertiveness, presentation, financial and problem-solving skills to enable you to become a leader of the future.





# ***THE SCHEMES***

We are able to offer placement and graduate schemes across a wide variety of disciplines. Whether you are looking for a career focused in the automotive industry or would simply like to join a company that can offer you real ongoing opportunities across the world, we have places for dedicated, hard-working and creative minds.

## ***PLACEMENT SCHEMES***

- Engineering
- Finance
- HR
- Information Systems and Technology
- Procurement
- Quality Assurance
- Supply Chain Management

## ***GRADUATE SCHEMES***

- Engineering
- Finance
- HR
- Information Systems and Technology
- Procurement
- Production Leadership
- Quality Assurance
- Supply Chain Management



***After starting on placement in Site Services in 2016, Rebecca completed a graduate scheme in Occupational Hygiene before developing her role as an Engineer with Health & Safety.***

With a real passion for the important work done within the department, Rebecca has been able to support and lead in a number of ground-breaking projects, including the global audit of 5-GMSR, tender reviews, COVID support, REACH activity, Biological Monitoring and LEV inspections. She has also been instrumental in setting up the Nissan Sunderland employee volunteering programme within the CSR pillar.

***REBECCA***

HEALTH & SAFETY ENGINEER



# 13-MONTH ENGINEERING PLACEMENT



## OVERVIEW

You will be involved in a full range of activities from minor repairs and improvements to major projects and new product launches. Whatever your area, you'll be combining hands-on engineering with project co-ordination, teamwork, support, leadership and extensive communication amongst other departments. Support is always on hand when you need it, but with the guidance of skilled and experienced engineers, and your own natural ability, you'll soon find yourself meeting challenges head on and dealing with all situations that arise.

## WHAT YOU'LL NEED

- Must be studying a STEM related degree
- Are able to partake in a 13 month placement as part of their course
- A willingness to learn with a passion for Engineering
- Strong analytical skills to assist with root-cause studies
- Excellent communication and leadership skills
- Creative and forward thinking
- Ability to adapt to a fast-paced organisation
- A good working knowledge of MS Office applications and CAD systems

## WHAT YOU'LL BE DOING

Your responsibilities will be dependent on which section of the Engineering Department you will work in. These include:

- Current Model Engineering and Production Support
- Quality Improvement
- Cost Reduction
- Facility Efficiency Improvements
- New Model Introduction and Facility Planning
- Vehicle Design for Manufacture
- Strategic Planning



# 13-MONTH FINANCE PLACEMENT



## OVERVIEW

The objective of finance is to support the organisation in making sound business and commercial decisions that maximise shareholder wealth.

Few financial organisations can match the breadth of involvement and responsibility that you'll find at Nissan. Whether it's reviewing existing budgets, supervising ledgers, setting new budgets for business plans, forecasting, assessing profitability or making costings for new models, you will have a hand in every area of our business.

An Industrial Placement position with Nissan Finance is an opportunity not to be missed. It's your chance to join us for one year in a full-time role and to gain real industry experience. Whether working to support our Research & Development groups in the UK, Spain, Russia, Belgium and Germany or in our Plant Finance, Shared Service Centre or European Controlling teams, the work is highly varied, challenging and rewarding. As one of our placements, you will have opportunities to play a key role not only in local operations – but have scope for involvement in regional and global matters.

## WHAT YOU'LL NEED

Must be studying a Finance-related degree\* (Sunderland) or studying a Finance, Mathematics or Science-based degree\* (Cranfield). It is not essential to have an accountancy degree, but you must have a keen and demonstrable interest in business and commerce.

- Able to partake in a placement year as part of your course
- Excellent communication and team-working skills
- Ability to present data in a clear and structured manner
- Energetic, flexible and committed to supporting the team in achieving tight deadlines
- Strong communication and interpersonal skills
- Challenging and flexible mind-set
- Proactive nature; able to work independently and as part of a team
- Articulate and able to influence beyond authority

## WHAT YOU'LL BE DOING

Depending on your placement location, you will be covering daily responsibilities in areas such as:

- Financial accounting and reporting and monthly account preparation
- Inventory reporting and control
- Product costing and logistics
- Business planning, budgeting and forecasting
- Financial and process control
- Treasury and Corporate Governance
- Tax and Customs
- Chairing and holding regular reviews with all parts of the business
- Accounts Payable and Receivable
- Fixed Asset management
- Maintenance and development of controls
- Continuous improvement of processes and procedures



## OVERVIEW

Nissan's success can only be as strong as the team of people who live and breathe its mission. Our HR group ensures the well-being, dedication, and high level of talent that allow us to make a positive impact on the world. Joining us in the HR department, you'll gain exposure to a wide range of operations based purely at Nissan, with additional opportunities to influence Nissan on a European and global scale. You'll provide real support for key HR projects, in particular the recruitment process, from identifying suitable candidates through to the coordination of recruitment events. Involved in all aspects of the employee lifecycle, from drawing up a contract to induction, through to final exit interviews, you'll gain experience in the application of best practice necessary to build a successful and well-rounded HR career.

## WHAT YOU'LL NEED

- Sunderland only – your degree must be HR or Business related, and you must have a driving licence
- Maple Cross – you can be studying any degree and you do not require a driving licence
- Able to partake in a placement year as part of your course
- Strong analytical skills and a data-driven thinker
- Excellent communication and team-working skills
- Creative and forward-thinking
- Ability to adapt to a fast-paced organisation
- Excellent working knowledge of MS Office applications

## WHAT YOU'LL BE DOING

On our HR Sunderland placement, you'll briefly experience a range of undertakings within the different department areas before taking responsibility for your own activities. This involves a mix of shop floor and office-based experience, allowing a varied arena in which to apply your talents and the chance to gain a much broader insight into the business as a whole.

In our HR Maple Cross Placement, you'll provide real support for key HR projects, in particular the recruitment process, from identifying suitable candidates through to the coordination of recruitment events. You will be involved in all aspects of the employee lifecycle; from drawing up a contract to induction, through to managing promotions and movers, you'll gain experience in the application of best practice necessary to build a successful and well-rounded HR career.

# 13-MONTH INFORMATION SYSTEMS & TECHNOLOGY PLACEMENT

## OVERVIEW

In a Placement role you will be part of a team that is contributing towards developing and enhancing secure systems used across our Manufacturing Plants, Regional Sales Units and Dealerships. With new challenges and opportunities coming thick and fast from a wide range of business areas, working for us will provide insight and exposure to various professional avenues whilst interacting with different cultures. Diversity is key, as most departments work cross functionally with Alliance Partners around the world. There are a range of different roles in Information Systems, these roles support the operational run the business activities and projects to support with key business initiatives.

## WHAT YOU'LL NEED

- Must be studying a degree in a Business, Computing, Technology or Security related discipline
- Are able to partake in a 13 month placement as part of your course
- Demonstrable passion for technology and innovation
- An understanding of Project Management techniques
- An understanding of secure design and cyber-safety
- An understanding of modern systems delivery including development tools, infrastructure, techniques, frameworks and approaches
- Experience using different Operating Systems
- Pragmatic problem solving approach, with the ability to make decisions and take measured risks
- Strong communication skills enabling the ability to work in a cross functional and diverse environment
- Strong analytical skills and a data-driven thinker
- Flexibility to travel – this may be required depending upon demands

## WHAT YOU'LL BE DOING

- Deliverable Management - Exposure to project management techniques to ensure quality, cost and time constraints remain a priority at all times. Agility & nimbleness is key and applying quality assurance to all aspects of delivery
- Run the business activities to support with a wide range of operations
- Collaboration with colleagues across all IS/IT teams including software development, infrastructure, cyber security and enterprise integration
- Development experience creating, enhancing and securing systems
- Project Management Techniques – Agile & Waterfall
- Analysis & Requirements Gathering – engaging business counterparts to identify problems and opportunities, to formalise business requirements
- Appreciation of Design – functional design of IS/IT systems, different technologies and architecture, secure development
- Incident management – identify, assess and remediate risks within business operations
- Cyber Security Awareness – contribute in delivering secure practises within the organisation



# 13-MONTH PROCUREMENT PLACEMENT



## OVERVIEW

Our European Procurement function is fast-paced and full of variety.

Our Procurement strategy at Nissan is simple; we focus on quality first. Sourcing suppliers who are able to achieve our exacting performance standards before working with them to continually reduce costs without comprising quality.

## WHAT YOU'LL NEED

- University degree or international equivalent
- Excellent written and oral communication and presentation skills
- Strong interpersonal skills, suitable for representing both Procurement internally and Nissan externally
- You will need to be a team player with a proactive, flexible attitude, able to work within tight deadlines and deliver under pressure
- A positive approach towards international travel
- MS Office computer skills. (Excel, PowerPoint, Word)
- Language Skills: Fluent English speaker, other languages would be an advantage

## WHAT YOU'LL BE DOING

As a Placement within the Procurement function you will be an important member of the team. From day one you will have an experienced mentor with you for you to be able to learn the skills to do the job and gain experience of working in a very fast-paced environment in a position that is a real role with real responsibilities.

You will have several projects on the go, at any one time. You'll be involved in data and cost analysis for future activities, potential supplier visits, liaison with internal departments and supporting within the section you are allocated to. With over 80% of typical car value from externally-sourced components you can understand the importance of the role that Procurement plays.



## ***OVERVIEW***

We don't build cars, we enable cars to be built! Combining technical know-how with hands-on expertise, our engineers define the processes and facilities needed to achieve production objectives. From procuring and installing innovative solutions to achieve maximum output, to root cause analysis and resolving quality issues, we support all areas of the manufacturing operation, ensuring seamless production of over 320,000 cars every year. Engineering is a key function offering a full spectrum of roles covering Mechanical, Electrical, Manufacturing, Automotive, Chemical, and Civil Engineering.

## ***WHAT YOU'LL NEED***

- Must be studying a STEM related degree- in Year 2 of your Bachelors Degree
- Are able to partake in a 13 month placement as part of their course
- A willingness to learn with a passion for Engineering
- Strong analytical skills to assist with root-cause studies
- Excellent communication and leadership skills
- Creative and forward thinking
- Ability to adapt to a fast-paced organization
- A good working knowledge of MS Office applications and CAD systems

## ***WHAT YOU'LL BE DOING***

You will be involved in a full range of activities from minor repairs and improvements to major projects and new product launches. Whatever your area, you'll be combining hands-on engineering with project co-ordination, teamwork, support, leadership and extensive communication amongst other departments. Support is always on hand when you need it, but with the guidance of skilled and experienced engineers, and your own natural ability, you'll soon find yourself meeting challenges head on and dealing with all situations that arise.



## OVERVIEW

You will help to define the flow of a world-leading Just-In-Time manufacturing operation; restructuring systems, processes and suppliers to help supply over 500,000 cars a year to market.

## WHAT YOU'LL NEED

- Currently studying a degree (all degrees considered)
- Able to partake in a placement year as part of your course
- Creative-thinking / Problem-solving
- Excellent written & verbal communication
- Good team worker
- Flexible working approach with ability to self-motivate
- Comprehensive understanding of Microsoft Office software (mainly Excel, PowerPoint, Word)
- Ability to adapt to a fast-paced organisation
- Knowledge of a foreign language may be an advantage

## WHAT YOU'LL BE DOING

This scheme will be completed in one of three areas depending on the outcome of your application:

- **Operations Management:** The permutations of our daily manufacturing schedule are endless. Our Operations Management team turns those permutations into a seamless and cost-effective manufacturing operation. You will work in a complex and multi-dimensional department, covering logistics, inventory control, Just In Time and supply chain management, along with participating in major project studies, including restructuring systems and processes to accommodate our new models.
- **Supply Chain Management & Logistics:** You will work within the three key areas of; Inbound Logistics: working with renowned logistics providers, suppliers, warehousing and material handling to ensure the smooth flow of parts into the factory. Outbound Logistics: Ensuring delivery of all vehicles to final dealer locations both in the UK and overseas, working with more than 50 logistics providers. Project and Cost Reporting: Managing new model projects and developmental cost reporting for UK, Spain & Russia.



# 2-YEAR ENGINEERING GRADUATE SCHEME



## OVERVIEW

As with all new graduates, you will spend your first few weeks working on the production line, this experience is vital in giving you a firm understanding of our business. Thereafter, you will be given exposure to other functions before being assigned to a team of engineers where you will develop specialised knowledge within a particular area. Initiative, confidence and a pro-active approach are essential qualities in our engineers, because you are not just responding to issues, you are looking for areas to improve, finding out how systems can operate to maximum efficiency, questioning methods and suggesting creative alternatives. With our exceptional training and development (including support to study for Chartered Engineer status), the guidance of experienced engineers, and your own natural ability, you'll find yourself meeting challenges head on and dealing with all situations that arise.

## WHAT YOU'LL NEED

- Must have or expect to achieve a 2.1 in a STEM related degree
- You must have permission to live and work in the UK without restriction at the time of hire
- A willingness to learn with a passion for Engineering
- Strong analytical skills to assist with root-cause studies
- Excellent communication and leadership skills
- Creative and forward thinking
- Ability to adapt to a fast-paced organisation
- A good working knowledge of MS Office applications and CAD systems
- Geographically mobile

## WHAT YOU'LL BE DOING

Your responsibilities will be dependent on which section of the Engineering Department you will work in. These include:

- Current Model Engineering and Production Support
- Quality Improvement
- Cost Reduction
- Facility Efficiency Improvements
- New Model Introduction and Facility Planning
- Vehicle Design for Manufacture
- Strategic Planning
- Technical Support
- Quality Assurance
- Health and Safety

# 2-YEAR FINANCE GRADUATE SCHEME



## OVERVIEW

Few financial organisations can match the breadth of involvement and responsibility that you'll find at Nissan. Whether it's reviewing existing budgets, supervising ledgers, setting new budgets for business plans, forecasting, assessing profitability or making costings for new models, you will have a hand in every area of our business.

## WHAT YOU'LL NEED

- Must have or expect to achieve a 2.1 in a finance related degree
- You must have permission to live and work in the UK without restriction at the time of hire
- Ability to present data in a clear and structured manner
- Energetic, flexible and committed to supporting the team in achieving tight deadlines
- Strong communication and interpersonal skills
- Challenging and flexible mind-set
- Proactive nature, reliable and able to work independently and as part of a team
- Articulate and ability to influence beyond authority

## WHAT YOU'LL BE DOING

We are looking for sufficiently flexible individuals who can assume responsibility for any aspects of the following:

- Financial accounting and reporting
- Inventory reporting and control
- Product costing and logistics
- Business planning and forecasting
- Financial and process control
- Treasury and Corporate Governance
- Tax and Customs

# 2-YEAR HR GRADUATE SCHEME



## OVERVIEW

Supporting over 160,000 employees doing business in over 191 countries and territories, our Human Resources group ensures the well-being, dedication, and high level of talent that allow us to make a positive impact on the world. As members of our strategic teams, HR professionals at Nissan are key to achieving the goals of the global organisation and balancing of the unique needs of individual employees.

HR is a key function within the business, working hand-in-hand with all departments as they attract, develop and engage their staff. Joining us in the HR department, you'll gain exposure to a wide range of operations, with opportunities to influence Nissan on a European and global scale. Areas within our HR department include Recruitment, Employee Relations, Payroll, Pensions, Strategy and Planning, Training and Development, Contracts and Communications.

## WHAT YOU'LL NEED

- Must have or are expected to gain at least a 2.1 in an HR or Business degree
- Strong analytical skills and a data-driven thinker
- Excellent communication and team-working skills
- Creative and forward-thinking
- Ability to adapt to a fast-paced organisation
- Excellent working knowledge of MS Office applications
- Geographically mobile

## WHAT YOU'LL BE DOING

You'll briefly experience a range of activities within the department before taking responsibility for your own area. This involves a mix of shop floor and office-based experience, allowing a varied arena in which to apply your talents and the chance to gain a much broader insight into the business as a whole.

Your responsibilities will be dependent on which section of the Human Resources Department you will work in. These include:

- Advising on Terms & Conditions of Employment
- Internal & External Recruitment
- Training
- Employee Induction
- Managing Trainee Schemes
- Graduate & Placement Recruitment
- Managing Contracts & Services
- Talent Management
- Projects, Strategy & Planning

# 2-YEAR INFORMATION SYSTEMS & TECHNOLOGY GRADUATE SCHEME

## OVERVIEW

As an Information Systems & Technology Graduate you will be supporting a variety of interesting projects and initiatives. With new challenges and opportunities coming thick and fast from a wide range of business areas. Working for us will provide insight and exposure to various professional avenues whilst interacting with different cultures. Diversity is key, as most departments work cross functionally with Alliance Partners around the world.



## WHAT YOU'LL NEED

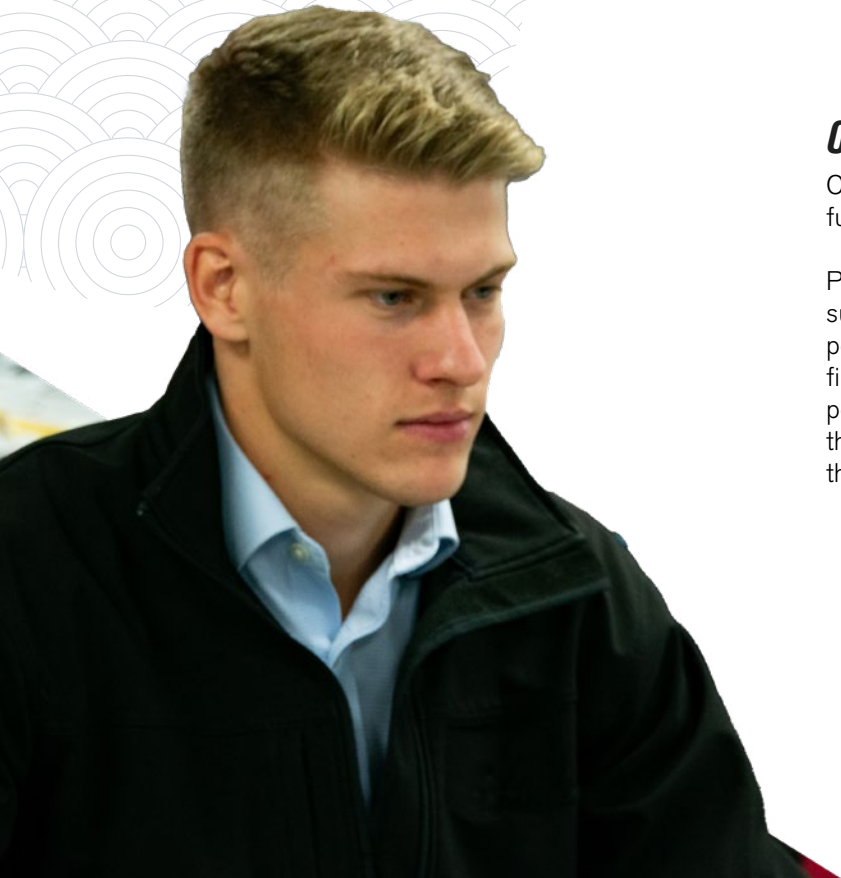
- Must have or expect to achieve a 2.1 in an IT, Computing or Technology related discipline
- You must have permission to live and work in the UK without restriction at the time of hire
- Demonstrable passion for technology and innovation
- An understanding of Project Management techniques
- An understanding of modern systems delivery including development tools, infrastructure, techniques, frameworks and approaches
- Pragmatic problem solving approach, with the ability to make decisions and take measured risks
- Strong communication skills enabling the ability to work in a cross functional and diverse environment
- Strong analytical skills and a data-driven thinker
- Flexibility to travel – this may be required depending upon demands

## WHAT YOU'LL BE DOING

- Deliverable Management - Exposure to project management techniques to ensure quality, cost and time constraints remain a priority at all times. Agility & nimbleness is key and applying quality assurance to all aspects of delivery
- Project Management Techniques – Agile & Waterfall
- Analysis & Requirements Gathering – engaging business counterparts to identify problems and opportunities, to formalise business requirements
- Appreciation of Design – functional design of IS/IT systems, different technologies and architecture
- Collaboration with colleagues across all IS/IT teams including software development, infrastructure, information security and enterprise integration.



# 2-YEAR PROCUREMENT GRADUATE SCHEME



## OVERVIEW

Our European Procurement function is fast-paced and full of variety.

Procurement at Nissan isn't about playing off one supplier against another to achieve the lowest price possible. We do things differently here. We place quality first, so we source suppliers who can achieve the performance standards we expect. Then, we work with them to continually reduce costs without compromising these high standards.

## WHAT YOU'LL NEED

As a key member of our global organisation, you'll need great communication skills and the confidence necessary to build relationships, develop partnerships and improve the way that we all work together. You'll also need to be flexible, adaptable and full of energy. You will possess credibility, professionalism, commercial awareness, long-term vision and the ability to think on your feet.

- University degree or international equivalent
- Excellent written and oral communication and presentation skills
- Strong interpersonal skills, suitable for representing both Procurement internally and Nissan externally
- You will need to be a team player with a proactive, flexible attitude, able to work within tight deadlines and deliver under pressure
- A positive approach towards international travel
- MS Office computer skills. (Excel, PowerPoint, Word)
- Language Skills: Fluent English speaker, other languages would be an advantage

## WHAT YOU'LL BE DOING

Purchasing is a key function within any automotive manufacturer, After all, when you consider that 80% of the car value is from externally sourced components you can understand how important your role within purchasing will be. Throughout your role, you will learn about the vast variety of functions within purchasing and will be allocated your own area of responsibility.

You will have several projects on the go, at any one time. Don't worry you will not be alone – you'll have an experienced mentor from day one who will support you to succeed. You'll be involved in data and cost analysis for future activities, supplier visits and continual liaison with internal departments.

# 2-YEAR PRODUCTION LEADERSHIP GRADUATE SCHEME



## OVERVIEW

A combination of hands on expertise with the knowledge of production processes, our production supervisors are at the heart of our operations, with responsibility for achieving high volume targets and developing continuous improvement programmes. As a Graduate Production Supervisor you will be at the cutting edge of launching new vehicles and responsible for producing 2 vehicles every minute.

## WHAT YOU'LL NEED

- Must have or expect to achieve a 2.1 grade at degree level
- You must have permission to live and work in the UK without restriction at the time of hire
- Strong analytical skills and a data-driven thinker
- Excellent leadership, communication and team working skills
- Creative and forward thinking
- Ability to adapt to a fast-paced organisation
- Geographically mobile
- A good working knowledge of MS Office applications
- Ability to analyse and problem solve

## WHAT YOU'LL BE DOING

Your responsibilities will be dependent on which section of the Production Department you will work in. These include:

- Graduate production Supervisors training plan;
  - 3 months as a Manufacturing staff, learning how the Production line runs
  - 6 months as a Team Leader, Learning the role of the Team Leader
  - 9 months as a Supervisor assistant, shadowing the role as a Supervisor
  - 6 months as a Graduate Supervisor, taking on the majority of a Supervisors role
- Once training plan is completed, you will be expected to run a zone with approximately x30 staff
- Develop Staff & personal objective setting
- Get involved in Disciplinary & Grievance procedures, including challenging conversations
- Ensure Zone & Department targets are met
- Manage all business KPI's in line with Drive 5 objectives (5S, Delivery, Cost, Safety, Talent)
- To manage a section safely, efficiently and effectively
- Development and co-ordination of improvement activities, and management of cross functional teams and activities to meet the shops quality targets
- To manage budgets

# 2-YEAR QUALITY ASSURANCE GRADUATE SCHEME



## OVERVIEW

An exciting opportunity to work in a fast paced environment here at Nissan Sunderland Plant. As a QA Graduate Engineer at Nissan you will be joining the most productive car plant in the UK. During your graduate scheme you will be involved in challenging projects from metal body stamping and engine assembly right through to full vehicle build. As with all new graduates, you will spend your first few weeks working closely with your mentor gaining insight to our production methods and gaining vital experience and a firm understanding of our business. Initiative, confidence and a pro-active approach are essential qualities in our engineers, because you are not just responding to issues, you are looking for areas to improve, finding out how systems can operate to maximum efficiency, questioning methods and suggesting creative alternatives. With our exceptional training and development, the guidance of experienced engineers, and your own natural ability, you'll find yourself meeting challenges head on and dealing with all situations that arise.

## WHAT YOU'LL NEED

- Achieved or working towards a minimum of a 2:1 in a STEM related degree
- You will be expected to function at an engineer level
- Creative thinker and strong problem solving skills
- Great team member with a flexible working approach
- Excellent written and verbal communication skills
- A good working knowledge of Microsoft Office applications and CAD systems
- Versatile with the ability to adapt to challenging situations
- Geographically mobile

## WHAT YOU'LL BE DOING

- Application and analysis of testing and inspection procedures
- Capture the voice of the customer
- Provide technical support to our production departments (mechanical/electrical)
- Quality evaluation between design drawings through to production parts and final assembly
- Use trend analysis tools to capture the performance of the product
- Lead product/process investigations in-house or in one of the hundreds of Nissan suppliers based in the UK and abroad
- Supporting and developing new model launch activities
- Being capable of taking control of your own responsibilities including time management to ensure adequate completion of tasks

# 2 YEAR SUPPLY CHAIN MANAGEMENT SCHEME



## OVERVIEW

You will help to define the flow of a world-leading Just-In-Time manufacturing operation; restructuring systems, processes and suppliers to help supply over 500,000 cars a year to market.

## WHAT YOU'LL NEED

- Must have or expect to achieve a 2.1 in a relevant degree
- You must have permission to live and work in the UK without restriction at the time of hire
- Strong analytical skills and a data-driven thinker
- Creative-thinking / Problem-solving
- Excellent written & verbal communication
- Good team worker / flexible working approach with ability to self-motivate
- Ability to adapt to a fast-paced organisation
- Efficient planning skills
- Excellent working knowledge of MS Office applications
- Knowledge of a foreign language may be an advantage
- Geographically-mobile

## WHAT YOU'LL BE DOING

This scheme will be completed in one of three areas depending on the outcome of your application:

- **Operations Management:** The permutations of our daily manufacturing schedule are endless. Our Operations Management team turns those permutations into a seamless and cost-effective manufacturing operation. You will work in a complex and multi-dimensional department, covering logistics, inventory control, Just In Time and supply chain management, along with participating in major project studies, including restructuring systems and processes to accommodate our new models.
- **Supply Chain Management & Logistics:** You will work within the three key areas of; **Inbound Logistics:** working with renowned logistics providers, suppliers, warehousing and material handling to ensure the smooth flow of parts into the factory. **Outbound Logistics:** Ensuring delivery of all vehicles to final dealer locations both in the UK and overseas, working with more than 50 logistics providers. **Project and Cost Reporting:** Managing new model projects and developmental cost reporting for UK, Spain & Russia.





***“I wanted the experience of working in a cross-cultural organisation, seeing the challenges and opportunities of working with people based all over the world.”***

**KATIE CARROL**

PRODUCTION CONTROL PLACEMENT  
NISSAN SUNDERLAND



***“I’ve had a variety of tasks and projects during my time at Nissan. The support from my mentor has been fantastic.”***

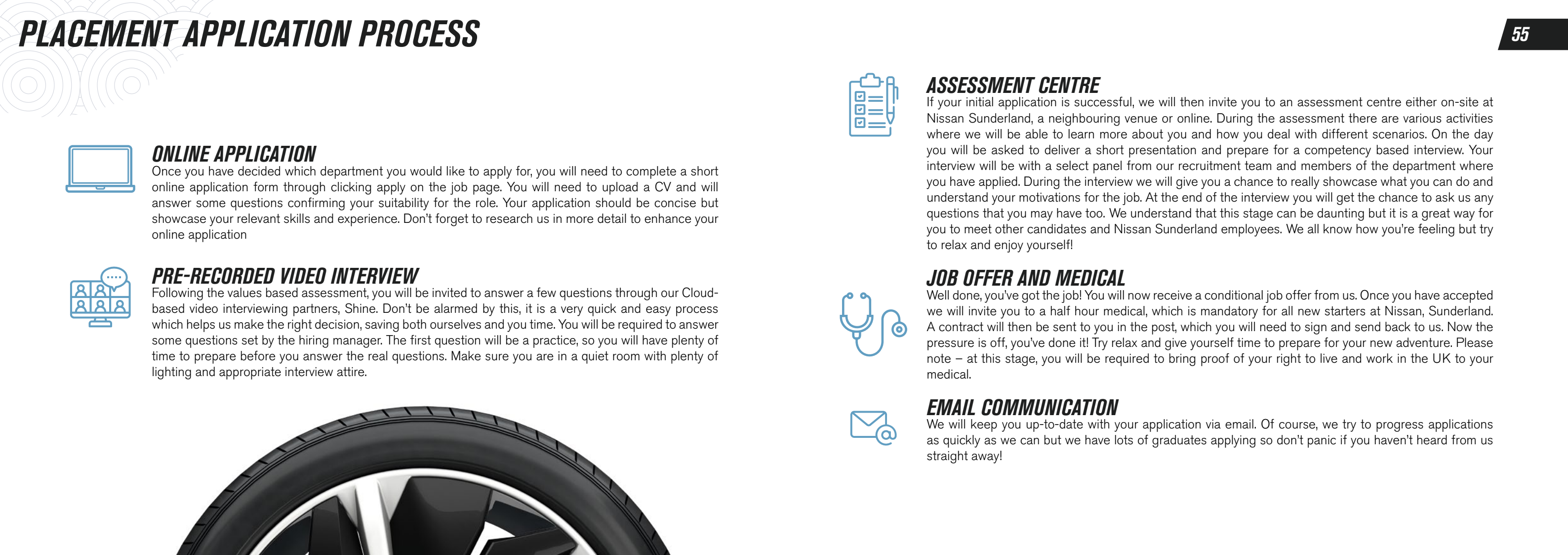
**KATIE**

HR PLACEMENT  
NISSAN SUNDERLAND

# ***APPLICATION PROCESSES***







# PLACEMENT APPLICATION PROCESS



## ONLINE APPLICATION

Once you have decided which department you would like to apply for, you will need to complete a short online application form through clicking apply on the job page. You will need to upload a CV and will answer some questions confirming your suitability for the role. Your application should be concise but showcase your relevant skills and experience. Don't forget to research us in more detail to enhance your online application



## PRE-RECORDED VIDEO INTERVIEW

Following the values based assessment, you will be invited to answer a few questions through our Cloud-based video interviewing partners, Shine. Don't be alarmed by this, it is a very quick and easy process which helps us make the right decision, saving both ourselves and you time. You will be required to answer some questions set by the hiring manager. The first question will be a practice, so you will have plenty of time to prepare before you answer the real questions. Make sure you are in a quiet room with plenty of lighting and appropriate interview attire.



## ASSESSMENT CENTRE

If your initial application is successful, we will then invite you to an assessment centre either on-site at Nissan Sunderland, a neighbouring venue or online. During the assessment there are various activities where we will be able to learn more about you and how you deal with different scenarios. On the day you will be asked to deliver a short presentation and prepare for a competency based interview. Your interview will be with a select panel from our recruitment team and members of the department where you have applied. During the interview we will give you a chance to really showcase what you can do and understand your motivations for the job. At the end of the interview you will get the chance to ask us any questions that you may have too. We understand that this stage can be daunting but it is a great way for you to meet other candidates and Nissan Sunderland employees. We all know how you're feeling but try to relax and enjoy yourself!



## JOB OFFER AND MEDICAL

Well done, you've got the job! You will now receive a conditional job offer from us. Once you have accepted we will invite you to a half hour medical, which is mandatory for all new starters at Nissan, Sunderland. A contract will then be sent to you in the post, which you will need to sign and send back to us. Now the pressure is off, you've done it! Try relax and give yourself time to prepare for your new adventure. Please note – at this stage, you will be required to bring proof of your right to live and work in the UK to your medical.



## EMAIL COMMUNICATION

We will keep you up-to-date with your application via email. Of course, we try to progress applications as quickly as we can but we have lots of graduates applying so don't panic if you haven't heard from us straight away!





## **ONLINE APPLICATION**

Once you have decided which department you would like to apply for, you will need to complete a short online application form through clicking apply on the job page. You will need to upload a CV and will answer some questions confirming your suitability for the role. Your application should be concise but showcase your relevant skills and experience. Don't forget to research us in more detail to enhance your online application



## **ASSESSMENT CENTRE**

If your initial application is successful, we will then invite you to an assessment centre either on-site at Nissan Sunderland, a neighbouring venue or online. During the assessment there are various activities where we will be able to learn more about you and how you deal with different scenarios. On the day you will be asked to deliver a short presentation and prepare for a competency based interview. Your interview will be with a select panel from our recruitment team and members of the department where you have applied. During the interview we will give you a chance to really showcase what you can do and understand your motivations for the job. At the end of the interview you will get the chance to ask us any questions that you may have too. We understand that this stage can be daunting but it is a great way for you to meet other candidates and Nissan Sunderland employees. We all know how you're feeling but try to relax and enjoy yourself!



## **JOB OFFER AND MEDICAL**

Well done, you've got the job! You will now receive a conditional job offer from us. Once you have accepted we will invite you to a half hour medical, which is mandatory for all new starters at Nissan, Sunderland. A contract will then be sent to you in the post, which you will need to sign and send back to us. Now the pressure is off, you've done it! Try relax and give yourself time to prepare for your new adventure. Please note – at this stage, you will be required to bring proof of your right to live and work in the UK to your medical.



## **EMAIL COMMUNICATION**

We will keep you up-to-date with your application via email. Of course, we try to progress applications as quickly as we can but we have lots of graduates applying so don't panic if you haven't heard from us straight away!



***“No two days are the same in Supply Chain Logistics and you have to thrive in a fast-paced environment. My scheme prepared me for this through the right support, mentorship and training. You are never on your own at Nissan.”***

**SAM**

SUPPLY CHAIN LOGISTICS PLACEMENT AND GRADUATE SCHEMES  
NISSAN SUNDERLAND



***“The best thing about Nissan is the responsibility you are given from day one, the scale of the projects and the ability to be part of a team.”***

**KIERAN**

BODY PLANNING ENGINEERING  
NISSAN SUNDERLAND





[careersatnissan.co.uk](https://careersatnissan.co.uk)